

# Neubau Turnhalle Uhwiesen



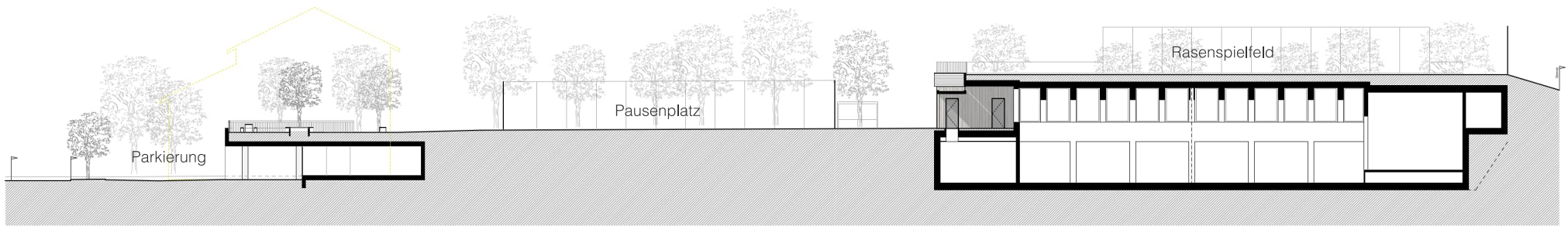
# Städtebau



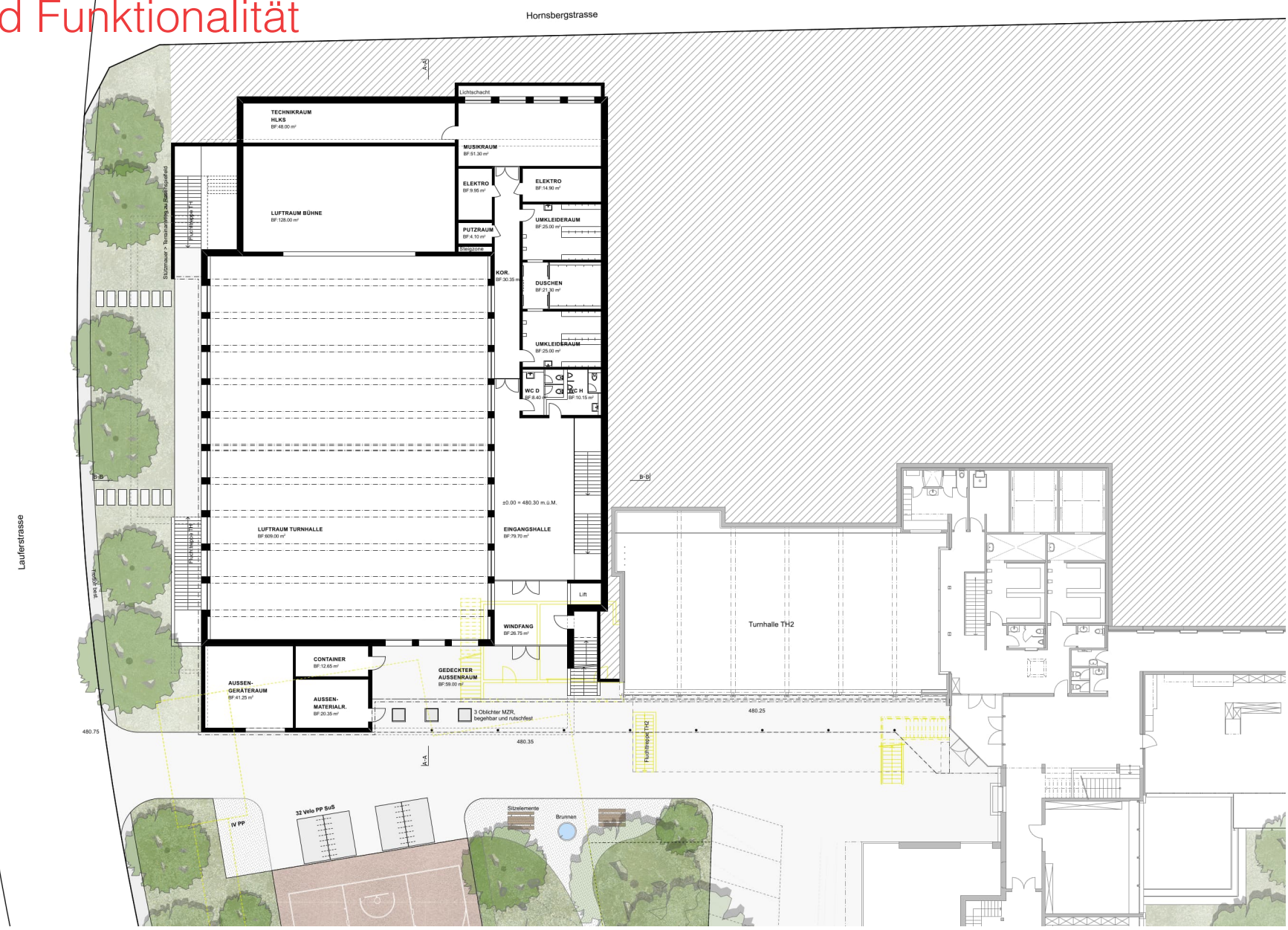
Bestand



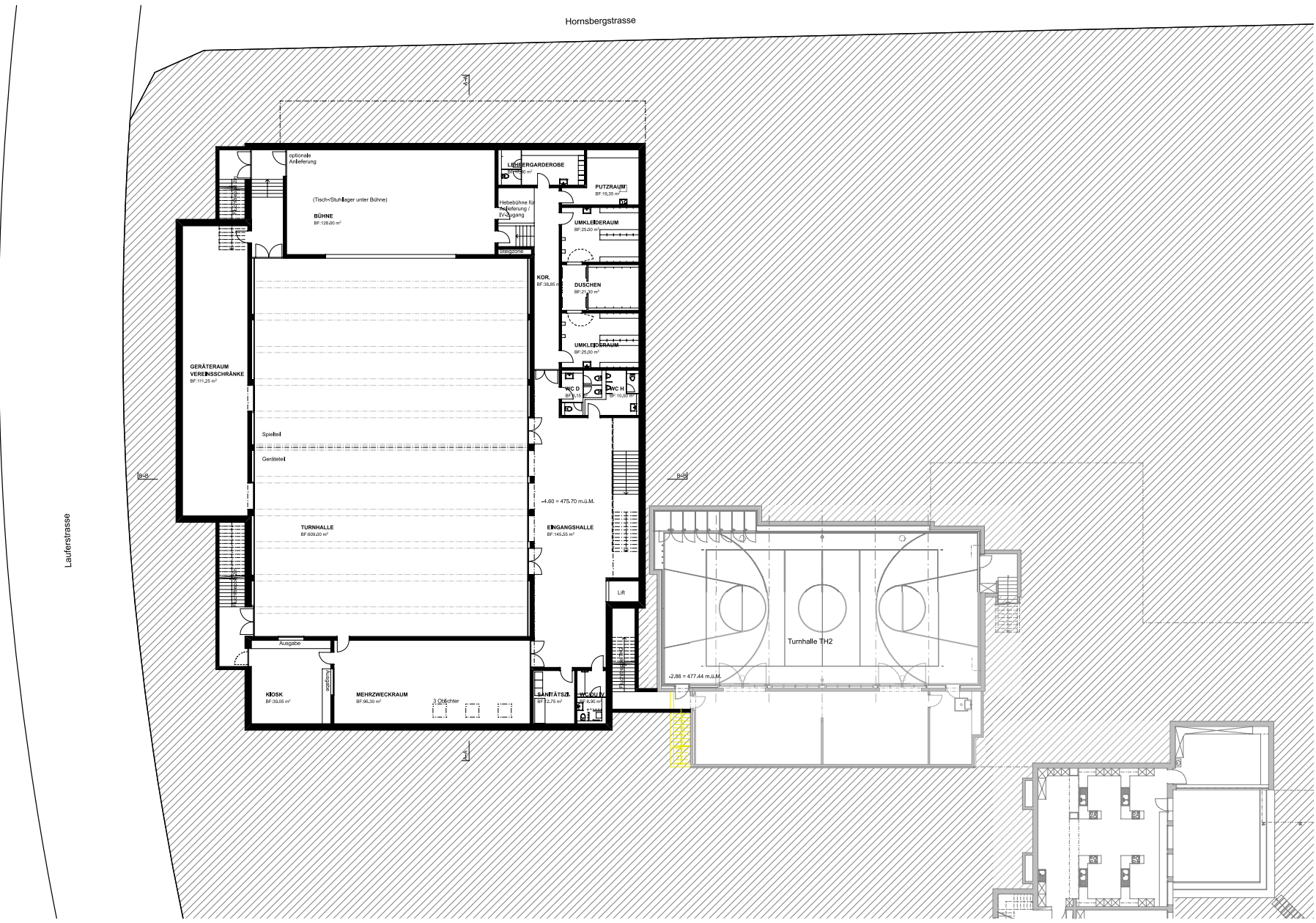
Situation



# Nutzung und Funktionalität

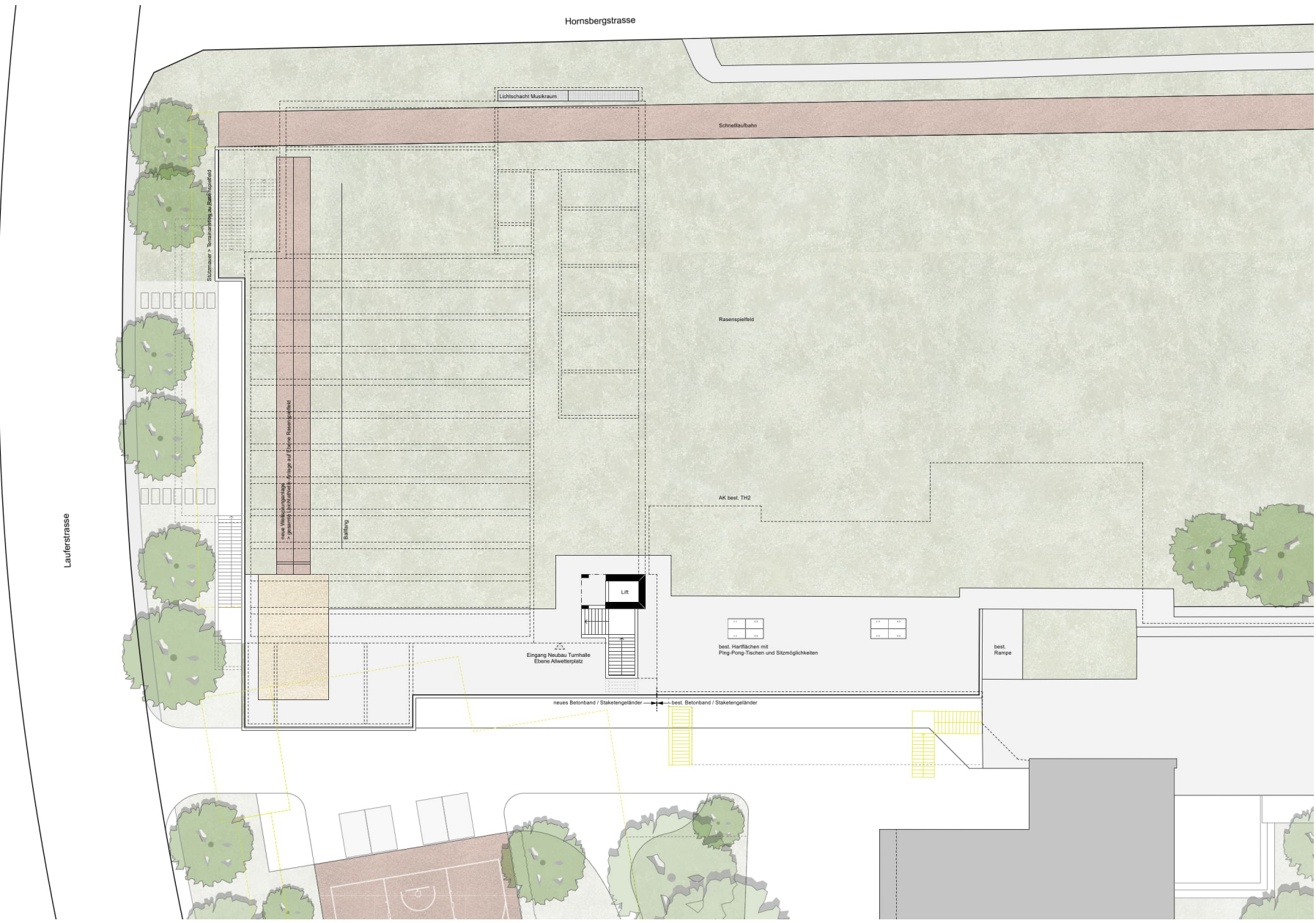


Erdgeschoss TH

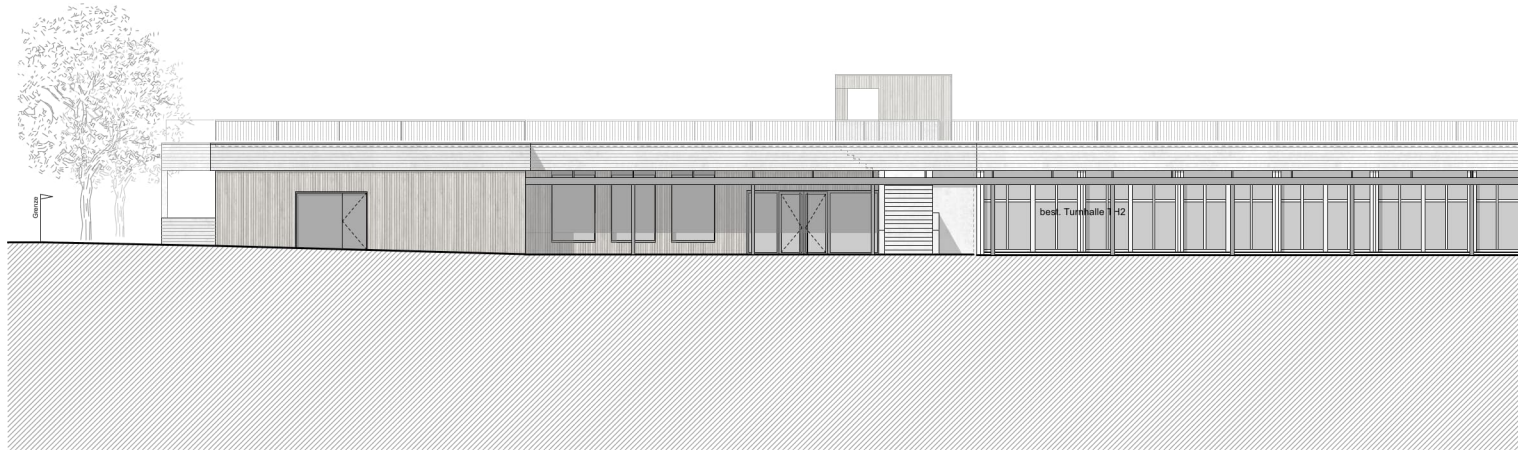


Untergeschoss TH

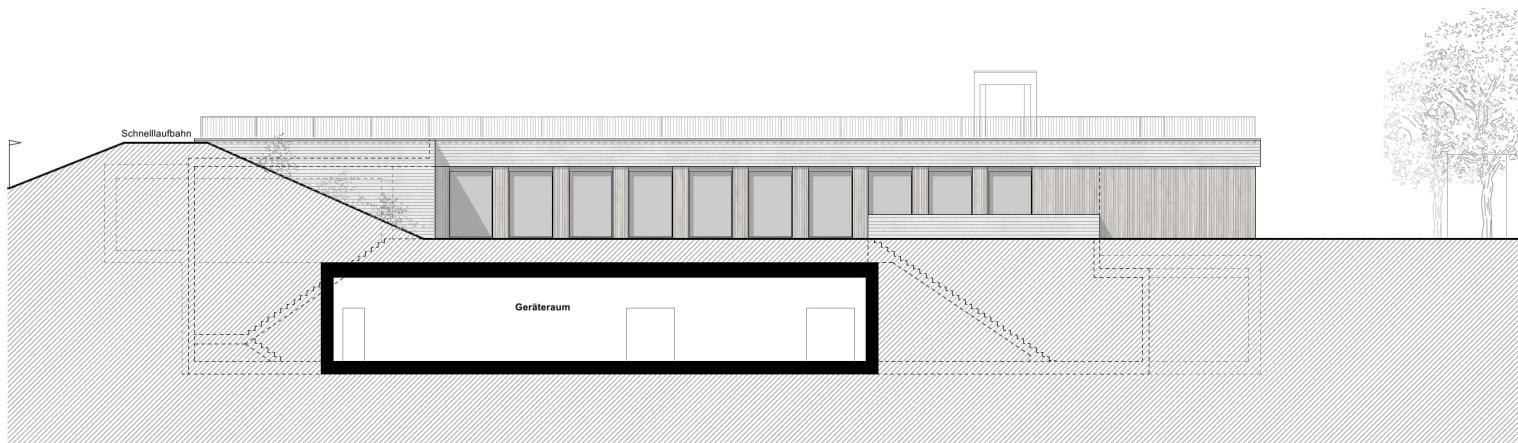




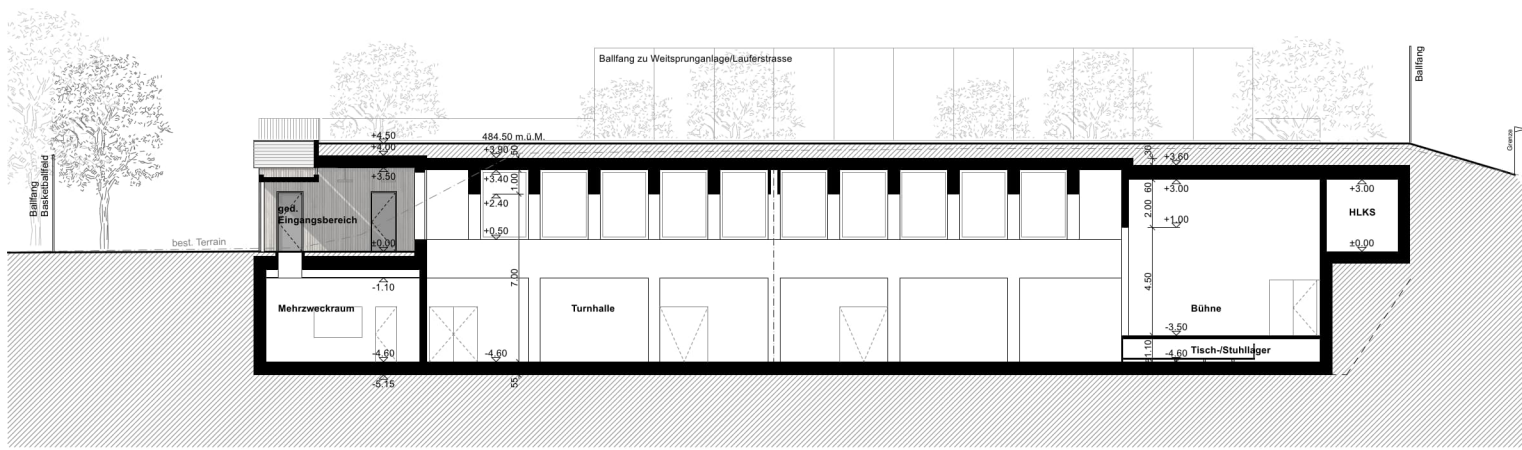
Dachaufsicht TH



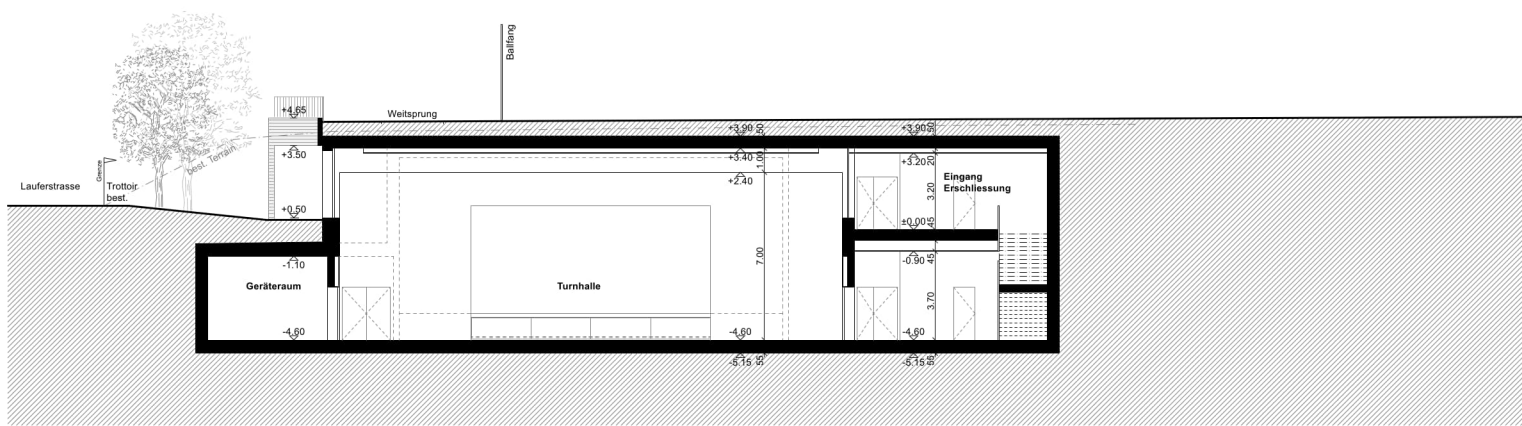
Fassade Süd-West



Fassade Nord-West



Längsschnitt A-A



Querschnitt B-B



# Umgebung

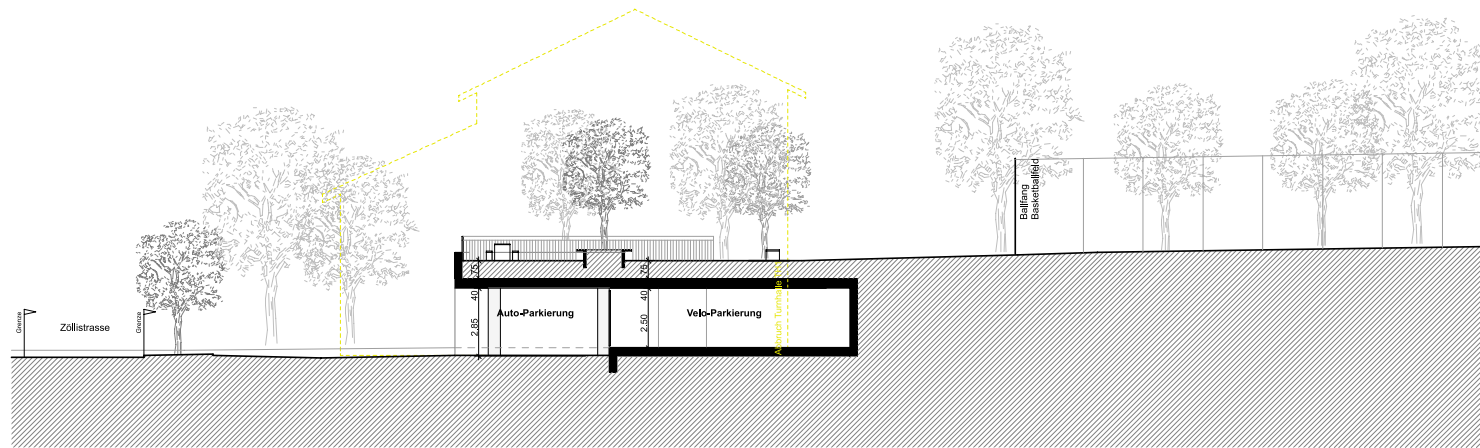


Situation - Parkierung





Untergeschoss PP



Querschnitt C-C



Danke  
Wir freuen uns auf die Realisation